



P.P.U.H.Remix-Oil
39-320 Przecław
ul.Wenecka 1/11
tel.666-744-744
e-mail-remixoil@op.pl

Autoryzowany Dystrybutor

Four Modernized Production Bases



Production base in Tangshan City
(Headquarters)
Area 45000sqm



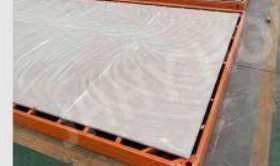
Production base in Zhangjiakou city
Area 20000sqm



Production base in Hunan Province
Area 8000sqm



Production base in Guangdong province
Area 30000sqm



Established in 2010, Beijing Jinhua hengyuan Prefab Housing Co., Ltd (JHHY) is a professional company dedicated to the production, R&D, and sales of high-end modular container houses.

The company has been awarded the ISO9001 Quality Management System Certification, Environmental Management System Certification (ISO14001), and an AAA Enterprise Credit Rating.

With six subsidiaries under the JHHY Group, the company boasts over 100,000 square meters of modern production facilities capable of synchronized manufacturing. JHHY is recognized as one of the largest manufacturers in the modular container house industry with a cumulative output value approaching tens of billions.

Over the years, through continuous innovation and practical application by a professional team, the company now holds more than 60 national-level technical patents and operates a top-tier prefabricated modular construction service system, establishing itself as a leading player in the prefabricated modular construction industry.

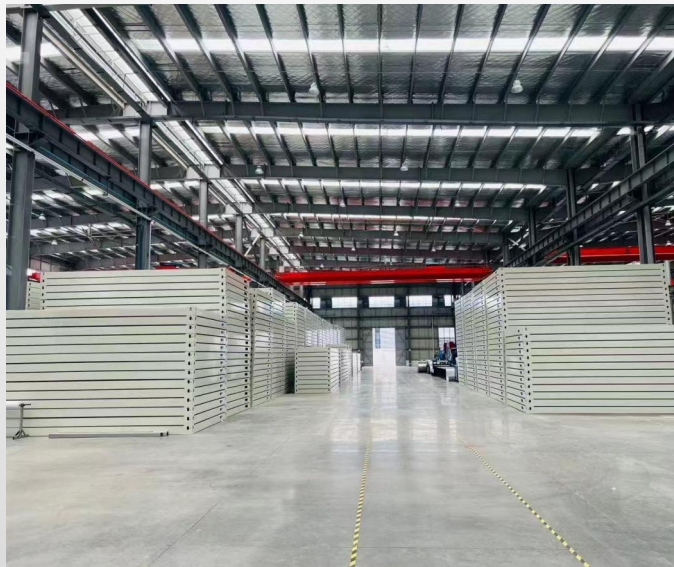
Competitive Advantages of JHHY

1. Designated supplier of modular houses for the Beijing 2022 Winter Olympics.
2. 20+ years experience in the industry.
3. Four production bases (100000+m²) equipped with modern facilities and technologies.
4. Products span across Asia, North America, South America, Europe and more.
5. We provide detailed installation instructions and free remote video installation guidance. If requested, we can also arrange for technical personnel to provide on-site installation guidance.

Robust Manufacturing and Delivery Capabilities









Robust Manufacturing and Delivery Capabilities







Offerings of JHHY

Expandable container house (Butterfly type)				
Item code : EC01				
Expandable container house 27.55sqm Midle cabinet 750mm W	External dimension (LxWxH)	4710mm×5850mm×2510mm	 JHHY-EX15 Interior	 JHHY-EX35 Interior
	Internal dimension (LxWxH)	4610mm×5300mm×2245mm		
	Folded dimension (LxWxH)	750mm×5850mm×2510mm		
2600kgs/unit; 6units/40HQ; 27.6sqm (expanded area)			 JHHY-EX15 Interior	
Item code: EC02 (Top sale) 36.3sqm 20feet				
Expandable container house 36.3sqm	External dimension (LxWxH)	5850 mm×6210mm×2510mm	  	
	Internal dimension (LxWxH)	5690mm×6110mm×2245mm		
	Folded dimension (LxWxH)	5850mm×2250mm×2510mm		
3000kgs/unit; 2units/40HQ; 36.3sqm (expanded area)				
Item code: EC03 40feet 71.72sqm				
Expandable container house 71.72qm customized	External dimension (LxWxH)	11700mm×6130mm×2510mm	      	
	Internal dimension (LxWxH)	11490mm×5980mm×2175mm		
	Folded dimension (LxWxH)	11700mm×2250mm×2510mm		
5000kgs/unit; 1units/40HQ; 71.72sqm (expanded area)				

Offerings of JHHY

Foldable container house (Z type)			Reference Photos		
Item code: FC130 (Top sale)					
Z type Foldable container house	External dimension (LxWxH)	5900mm×2500mm×2470mm			
	Internal dimension (LxWxH)	5780mm×2340mm×2280mm			
	Folded dimension (LxWxH)	5900mm×2500mm×440mm			
1260kgs /unit; 10units/40HQ					
Item code: FC155					
Z type Foldable container house	External dimension (LxWxH)	5900mm×2500mm×2470mm			
	Internal dimension (LxWxH)	5780mm×2340mm×2250mm			
	Folded dimension (LxWxH)	5900mm×2500mm×490mm			
1260kgs /unit; 8units/40HQ					

Detachable container house (install all parts at construction site)					
Detachable container house	External dimension (LxWxH)	6055mm×2990mm×2760mm			
	Internal dimension (LxWxH)	5930mm×2830mm×2430mm			
16units/40HQ;					
Flat pack container house					
Flat pack container house	External dimension (LxWxH)	5900mm*2435mm*2896mm			
	Internal dimension (LxWxH)	5749mm*2275mm*2540mm			
	Folded dimension (LxWxH)	5900mm*2435mm*650mm			
2500kgs/unit; 8units/40HQ;					

Partial Application Cases_Typical Projects



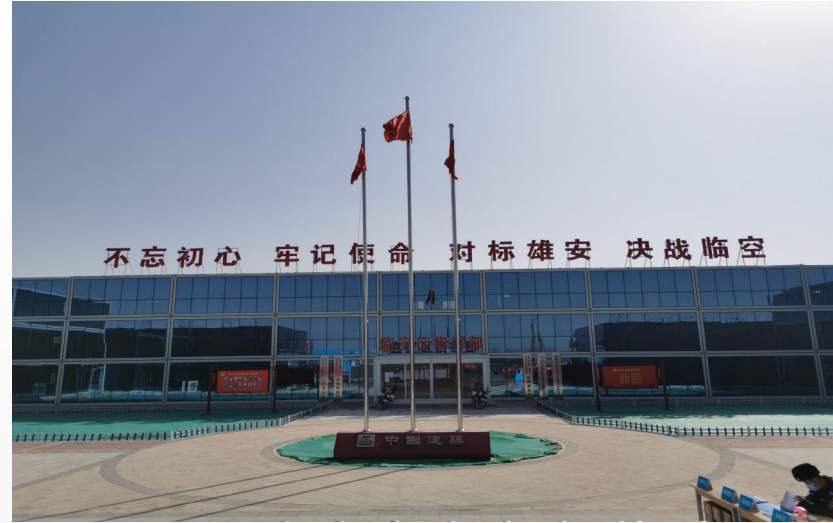
2022 Beijing Winter Olympics



On-site Construction Photos in Tanzania



Cumstomized Z-type Container Houses for Libya



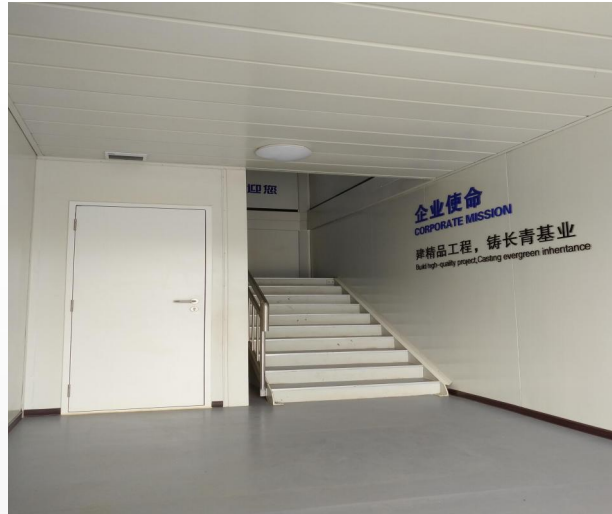
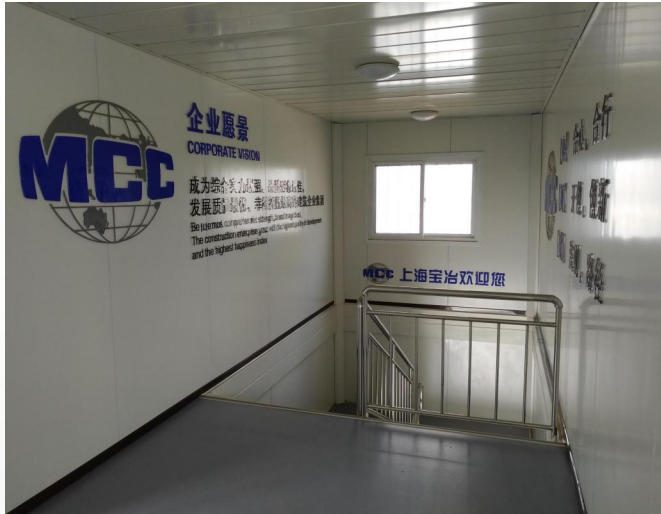
Aviation Zone Command Center In Beijing City



Qinhuangdao University of Geosciences



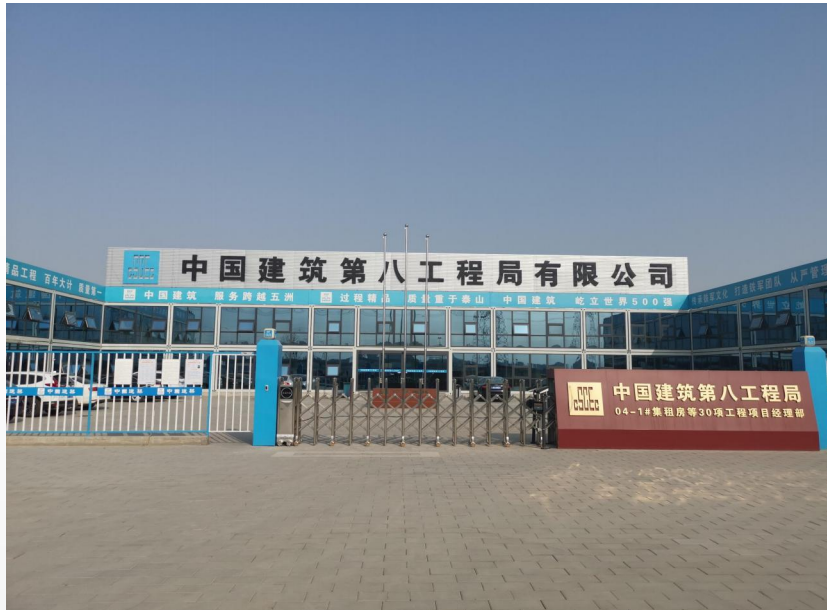
State Grid_Qinghai Converter Station



Shanghai Baoye Group



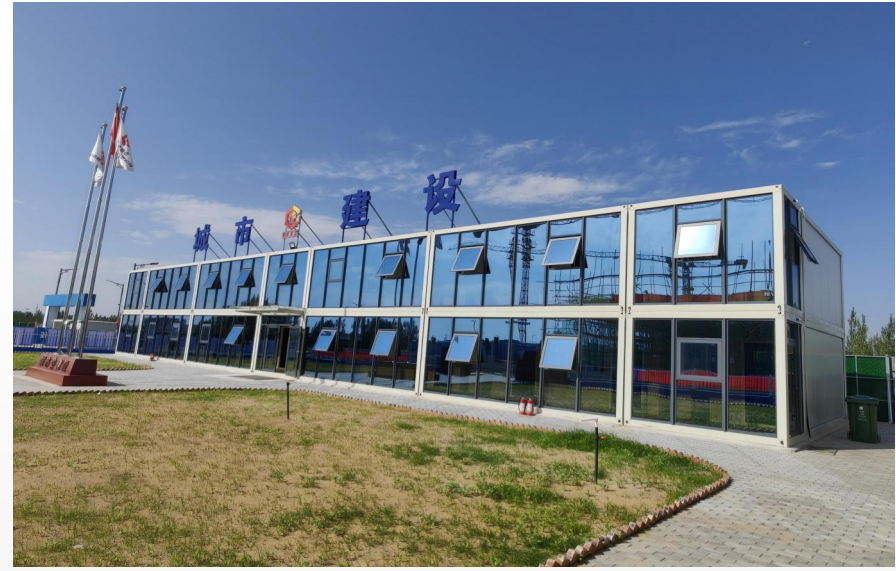
NanJing Lishui Medically Integrated Nursing Center



China Railway Eighth Group



Talent Community of ShouGang Group



Erdos Urban Construction Command Center



Henan Forestry Vocational College



Shandong Cancer Hospital